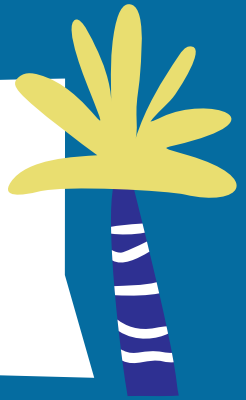



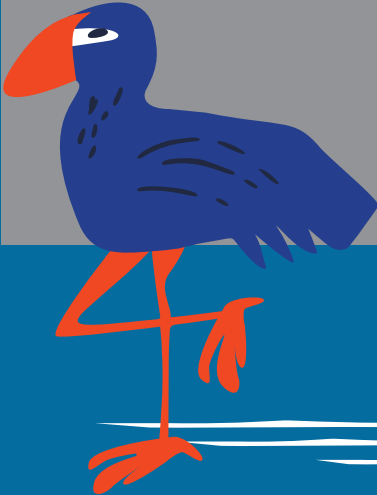


**OREWA
BEACH**
- school -

ANNUAL PLAN 2024

AN ENVIRONMENT WHERE EVERYONE FEELS SAFE AND SECURE



TERM 1-4	SUCCESS INDICATORS	RESOURCING	RESPONSIBILITY
<p>Foster relationships with all stakeholders.</p> 	<p>Actively cultivate reciprocal relationships with the community and families</p> <p>Actively involved with Ngāti Manuhiri.</p> <p>Actively involved with Te Herenga o Waka attending termly meetings</p> <p>Continued relationships with Chinese and Japanese students</p>	<p>Ngāti Manuhiri</p> <p>Te Herenga o Waka Release time available</p> <p>Te Puke consulting</p> <p>Kahui Ako</p>	<p>SLT</p> <p>Staff</p>
<p>Value our staff's wellbeing</p>	<p>Wellbeing activities and initiatives for staff each term.</p>	<p>Wellbeing staff representative.</p>	<p>SLT</p> <p>BOT</p>
<p>A space where students feel safe to be who they are</p> 	<p>Well-being survey to determine students feel safe at school Term 2024.</p> <p>A dedicated safe and secure place for tamariki at break times</p> <p>Variety of opportunities for students to opt into at break times.</p>	<p>Wellbeing staff representative.</p> <p>New community space developed (He Waka Haumarū)</p> <p>Dedicated duties for staff</p>	<p>All staff</p>





**OREWA
BEACH**
- school -

ANNUAL PLAN 2024



SUCCESS FOR ALL



TERM 1-4

Reciprocal teaching and learning



SUCCESS INDICATORS

Teachers are engaging in PLD and are putting new learning into practice

Implementation of the new curriculum

Consolidation and streamlining of the structured literacy programme and The Code.

Using learning goals to assess and report progress

RESOURCING

PLD budget
Booked targeted staff meeting.

Kahui Ako

Hero - student management system

RESPONSIBILITY

SLT

Kahui Ako Across school lead

Literacy Leader

Teaching Staff
Students

Celebrate all types of success

All students' identities, abilities, and talents are recognised and affirmed through school (assemblies, newsletters) and classroom practice.

Parents are aware of their child's progress and achievement

Incentive programmes

Hero reporting system

All staff

An aspirational goal of 80% at or above achievement in literacy and numeracy

Achievement analysis results (mid/end of year)

We will continue to track student achievement through targeted team meetings.

Curriculum refresh

SLT

Assessment leader

Staff






**OREWA
BEACH**
- school -

ANNUAL PLAN 2024



A CULTURALLY SUSTAINING CONTEXT FOR LEARNING

TERM 1-4	SUCCESS INDICATORS	RESOURCING	RESPONSIBILITY
<p>Have a commitment to “Knowing better and Doing better”(Niho Taniwhai)</p> 	<p>Staff actively engaged with Te Puke (PLD provider)</p> <p>Increased number of staff engaged in active Te Reo learning.</p> <p>Team leaders involved in leadership coaching with a Te Ao Māori lens.</p>	<p>Māori Achievement Collaborative (MAC)</p> <p>Takatu for teachers or any other māori language programme that works best for their learning style</p> <p>Ongoing relationship with Te Herenga Waka (community marae)</p> <p>Ngāti Manuhiri Hone Heke Rankin (Te Puke)</p> <p>MAC facilitator</p>	<p>SLT</p> <p>All staff</p> <p>Kahui Ako</p>
<p>Our Māori learner’s culture will be recognised and taught in their school.</p> 	<p>All staff are using the Kahui Ako Māori lesson plans.</p> <p>All context plans have a Te Ao Māori lens</p> <p>Students and staff are using Te Reo more in everyday language.</p> <p>School waiata, haka, and pepeha are developed and used.</p> <p>Pou created together with Ngāti Manuhiri to welcome people to our kura.</p> <p>Te Whetu programme (Hone Heke) working with Māori boys/young men. Depending on availability a group of girls.</p>	<p>Kahui Ako</p> <p>Localised curriculum and Aotearoa Histories Curriculum</p> <p>Ngāti Manuhiri</p> <p>MAC facilitator</p> <p>Hone Heke Rankin (Te Puke)</p>	<p>SLT</p> <p>All staff</p> <p>Kahui Ako</p> 

